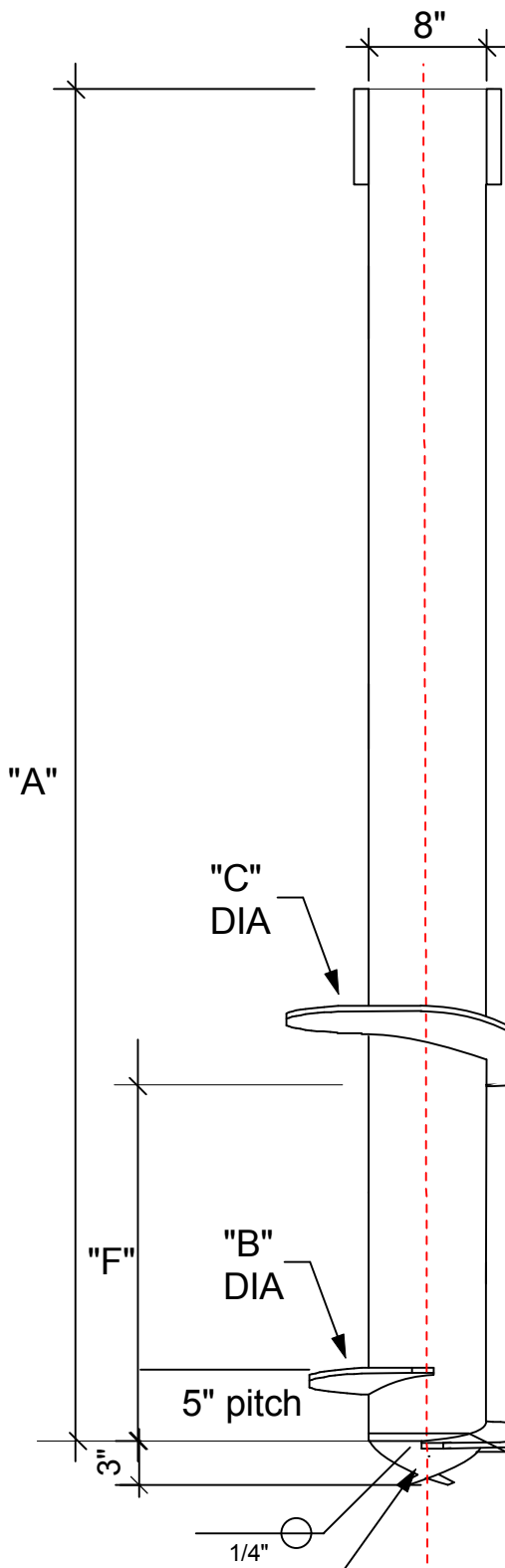


1. HOT DIP GALVANIZED PER ASTM 153-(LATEST REVISION) OR EPOXY SEE SPEC SHEET
2. LEAD/STARTER AND EXTENSION SECTION LENGTHS AND HELIX SPACINGS ARE NOMINAL,
3. NOMINAL SPACING BETWEEN HELIX PLATES IS THREE TIMES THE DIAMETER OF THE LOWER HELIX. OR AS DESIGNED
4. HELIX MATERIAL LOW CARBON STEEL MEETING THE GENERAL REQUIREMENTS OF AISI, OR ASTM A36, OR A572, 1/2"THICK MATERIAL.
5. PIPE SHAFT MATERIAL 8" NOMINAL, SCHEDULE 40 WALL .322 THICKNESS PER ASTM GRADE A53-B.
6. ALL WELDING TO BE DONE BY WELDERS CERTIFIED UNDER SECTION 5 OF THE AWS CODE D1.1.
7. HELIX PLATES FORMED INTO A RAMP SPIRAL, AVAILABLE IN VARIOUS DIAMETERS.
8. CAST IRON FISH PILOT TIP

LEAD SECTIONS					
CAT. NO.	"A"	"B"	"C"		"F"
	7'	16"	18"		AS DESGND
	10'-6"	18"	24"		
	21'	24"			



PILOT TIP (GS404)

MODEL		WGP8402			
TITLE		WINSLOW GEO PILE™			
TITLE		DOUBLE FLIGHT STARTER			
SIZE	DWG NO.	CAT / PART / ASSY NO.		REV	
SC		SEE CHART		-	
DO NOT SCALE THIS DRAWING		DRN BY	JLW	DATE	3/6/09
				SHEET	1/1

CONFIDENTIAL: THIS DRAWING AND ITS CONTENTS ARE CONFIDENTIAL AND THE EXCLUSIVE PROPERTY OF PACIFIC HOUSING SYSTEMS LLC. NO PUBLICATION, DISTRIBUTION OR COPIES MAY BE MADE WITHOUT THE WRITTEN CONSENT OF PACIFIC HOUSING SYSTEMS LLC. ALL RIGHTS RESERVED UNDER COPYRIGHT LAWS.